

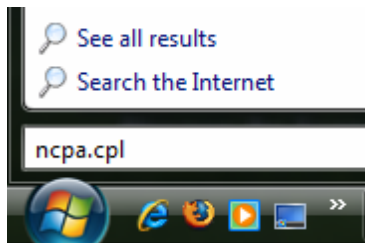
## DSL Setup: Windows Vista

1. Simply plug in modem and make all connections to your computer (see "Configuration" image below).

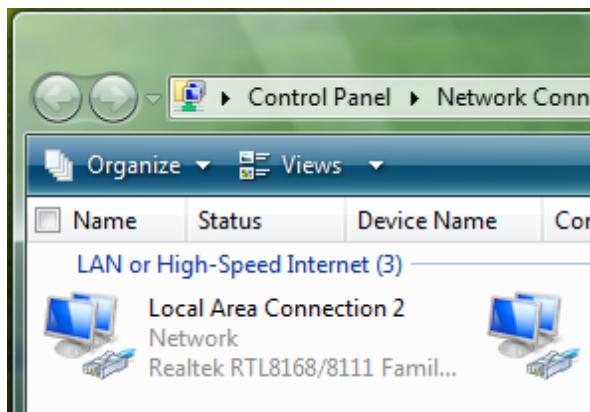
2. Restart computer, and go online.

**Note:** If this does not work, your PC needs to be configured to automatically obtain an IP. To do this uses the following procedure.

1. To open the connection list, you can just type "*ncpa.cpl*" into the Start menu search box:

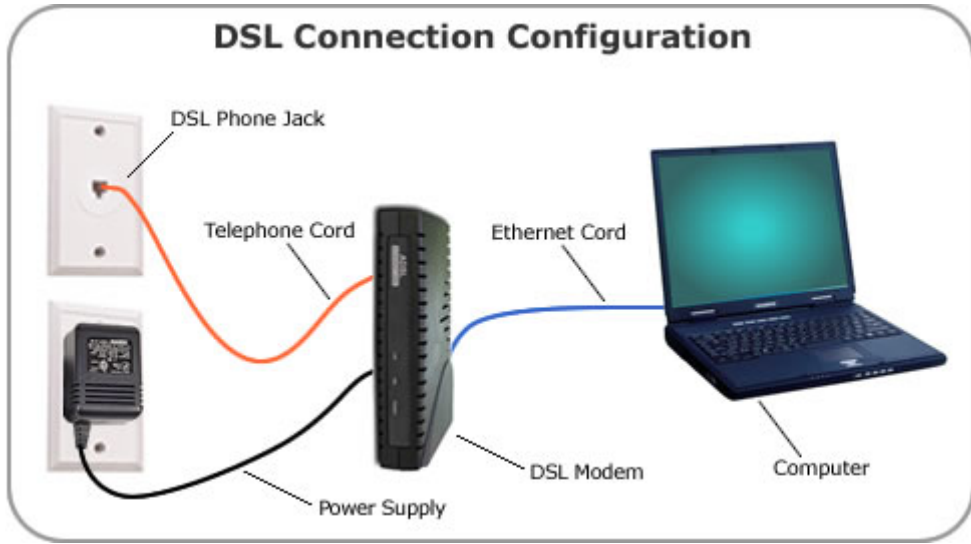


And up pops the network connection:



2. Right click on Local Area Connections and select Properties
3. Click on Internet Protocol Version 4 (TCP/IPv4)--> Properties
4. Select "Obtain an IP address automatically"
5. Select "Obtain DNS server address automatically"
7. Click OK

## DSL Connection Configuration



Note: Your DSL modem may look different to the one pictured above.